

Unser Fußrätzel

Für Profis

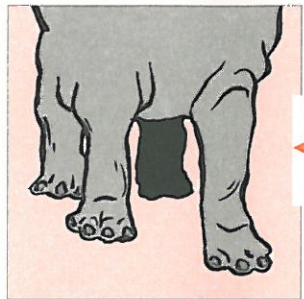
Name: Milena Merkel

Klasse: 4

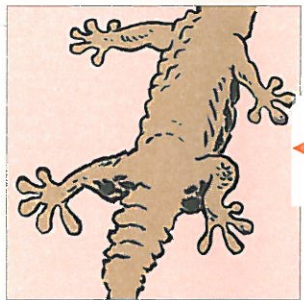
Wer läuft denn da?
Welche Füße gehören zu welchem Tier?



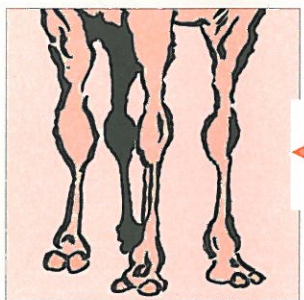
Schildkröte 1



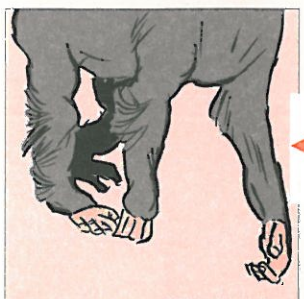
Stark Nüchtern 2



Krokodil 3



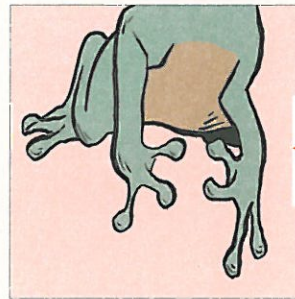
Kamel 4



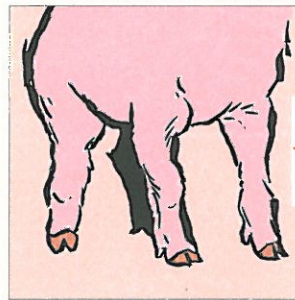
Affe 5



Maulwurf 10



Frosch 9



Schwein 8



Zebra 7



Maus 6

